



Approved by  
French Navy



Special Forces Covered  
Navigation



UXO Detection



Search & Recovery for  
Police and Firemen

## Description

Sonadive assists divers during recognition or object detection missions.

The embedded navigation system relies on the several sensors: heading, immersion, DVL (Doppler) and a GPS for surface initialization.

**Divers can communicate with each other and the surface unit in real-time** via the acoustic modem, sharing contacts and their symbology (MILEC, MILCO...) and SMS within 2.2 km range reaching 5 km using RTSYS relay beacons.

Sparse-LBL allows underwater navigation and repositioning in a highly accurate way.

Sonar and navigation data are fully recorded allowing mission replay, data analysis and export.

With 6 hours of battery life, the autonomy can be extended by swapping batteries under water during mission.

The products are subject to export control authorization.

## Payloads & Options

- Acoustic camera: 450 kHz or 900/2250 kHz
- Video Camera: Divecam - 720 Miniature Monochrome CCD
- Large screen: 12" visible in all water conditions
- Gradiometer
- DVL

## Advantages

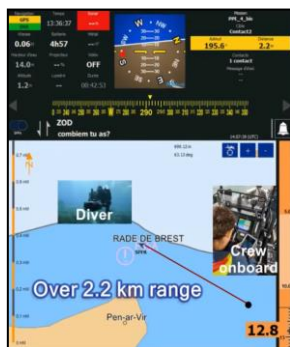
- **Always safe** operations thanks to the lowest magnetism on the market
- **High navigation accuracy** using sparse-LBL repositioning system
- **Extended underwater communication range** (2.2 km; up to 5 km with beacon)
- **Communication network high reliability** even in harbor and shallow water environments
- **Clear Target identification** underwater thanks to its large 12" screen

## Supplied Hardware

- Floating removable GPS antenna
- Integrated smart georeferenced POI
- INS
- Pressure sensors
- Wet pluggable batteries



Diver & SonaDive® camera screen



2.2 km range (up to 5 km with RTSYS beacon)

## Detection

SonaDive® is fitted with BlueView 2D Multi-Beam Sonar acoustic cameras.

Two models are available with the following equipment:

- BLUEVIEW M 450 kHz-45
- BLUEVIEW M 900 kHz/2 250 kHz-45

The cameras are interchangeable from one model to another.

## Gradiometer

A fluxgate probe positioned vertically on the side of the system can be connected and disconnected during the mission thanks to its wet mate connector.

## Advanced navigation capabilities

- DVL : 1200 kHz
- Floating GPS Antenna with 3 types of cable
- Sparse-LBL repositioning
- INS : High performance
- High accuracy pressure sensor

## Communication

The transducer is connected to the surface suitcase controlled by the laptop via Bluetooth connection.

This system allows the connection between the units and their monitoring in real-time.

## Screenshot examples



Sonar picture



Tactical picture

## Navigations capacities

- Max operating depth: 100 m
- Submarine signal range: 3000 m
- Autonomy: 6 hours

## Dimensions

- Height: 270 mm
- Width: 372 mm
- Length: 560 mm
- Weight: 20 kg