



ASW Training



Torpedo training



Operator Training

## Description

SEMA is an autonomous, recoverable, acoustic and magnetic target dedicated to ASW training. It is operable for all kinds of platforms such as surface ships, submarines, helicopters and ASW aircraft.

Easy to deploy from both a RHIB or a boat, the navigation route is plotted with either waypoints or segments. Different types of training modes such as passive, active and combined acoustics can be programmed.

SEMA is easy to operate and recover and is reconfigurable in one hour.

The products are subject to export control restriction.

## Advantages

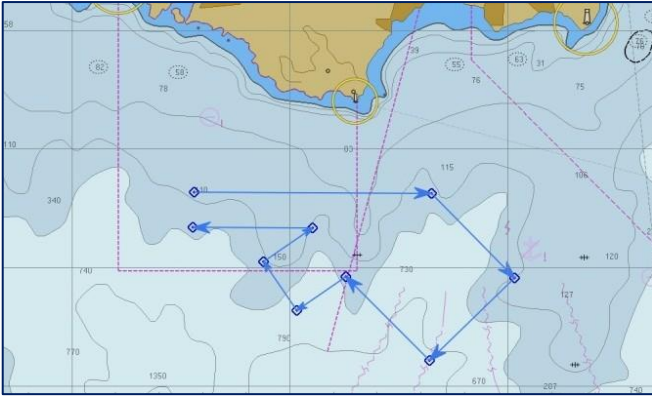
- Remote control mode (radio, acoustic)
- Modern sonar compatibility
- Easy to deploy and recover
- Reconfigurable in one hour

## Payload & Options

- Passive, active and combined acoustics
- Pre-programmed missions
- Evasive maneuver
- Encryption & Deciphering Keys
- Adapted Buoyancy (sea or freshwater)

## Supplied Hardware

- Fully rugged laptop
- The launching ramp and pike poles
- INS, GPS, DVL & pressure navigation sensor



## Programmable mission modes

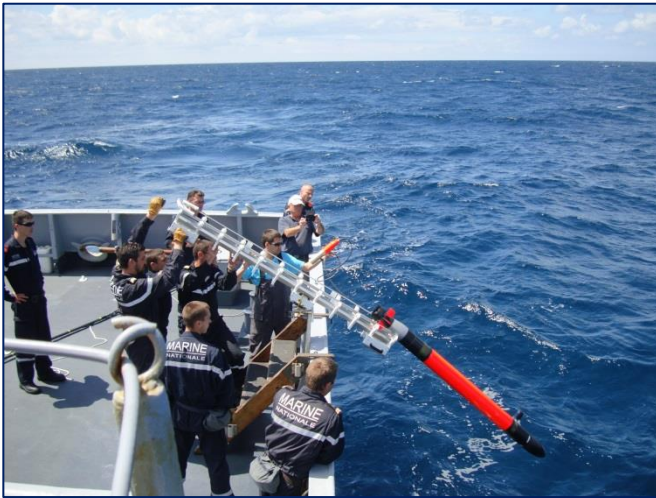
The mission can be programmed either by:

- Configurable segments (heading, speed, depth, timeout)
- Waypoints (latitude, longitude, speed, depth)

## Passive, Active & Combined acoustic training modes

SEMA offers several types of acoustic training capabilities:

- Acoustic echo-repeater: (1 to 33 kHz)
  - 5 bands for active sonar frequency
  - 2 bands for head acoustic torpedo
- Multi-echo artificial intelligence
- 6 narrowbands: 200 Hz to 38 kHz
- 2 broadbands: 450 Hz to 8 kHz and 10 to 23 kHz
- Acoustic recorder that encrypts data



## Easy to use - Easy to deploy - Easy to recover

- Automatic start at programmed depth
- Defined GPS recovery point
- Signalizations:
  - Antenna mast (GPS, X-Band, Flash Light...)
  - Acoustic: pinger (8 kHz), homing (1 to 20 kHz)
- Acoustic command to stop the target
- Auto recovery mode on system failure
- Recovery from any type of boat



## Reconfigurable in one hour

In one hour it is possible to change the rechargeable battery, to download encrypted data on a rugged computer device and to reprogram the system.

## Navigation capacities

- Immersion: Down to 300 m
- Speed: 4 to 15 knots
- Autonomy:
  - 10 hours at 4 knots
  - 1.5 hour at 15 knots

## Dimensions

- Length: 2130 mm
- Shell Diameter: 150 mm
- Weight (air): 33 kg
- Height: 285 mm

POWERED BY SDA<sup>®</sup>